

IN LOVING MEMORY OF



MELANIE LOUISE WATTS  
'MEL'

4th July 1971 - 7th January 2023

Wednesday 22nd February 2023  
Sherwood Forest Crematorium  
at 11.30 am



# ORDER OF SERVICE

Led by civil celebrant, Anja Laidler

PROCESSIONAL MUSIC

Landslide  
by Fleetwood Mac

INTRODUCTION AND WELCOME

POEM  
She Is Gone

You can shed tears that she is gone,  
Or you can smile because she has lived.  
You can close your eyes and pray that she will come back,  
Or you can open your eyes and see all that she has left.  
Your heart can be empty because you can't see her,  
Or you can be full of the love that you shared.  
You can turn your back on tomorrow and live yesterday,  
Or you can be happy for tomorrow because of yesterday.  
You can remember her and only that she is gone,  
Or you can cherish her memory and let it live on.  
You can cry and close your mind,  
be empty and turn your back.  
Or you can do what she would want:  
smile, open your eyes, love and go on.

*by David Harkins*





EULOGY

SILENT REFLECTION

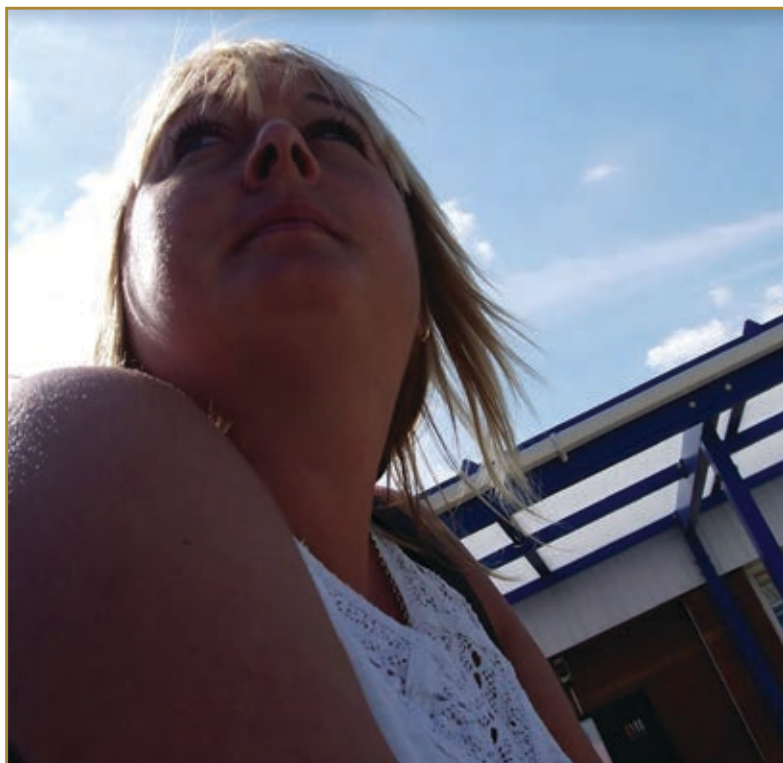
VISUAL TRIBUTE  
Music: Fields Of Gold  
by Eva Cassidy

FINAL WORDS OF FAREWELL

POEM

Look For Me In Rainbows

Time for me to go now, I won't say goodbye;  
Look for me in rainbows, way up in the sky.  
In the morning sunrise, when all the world is new,  
Just look for me and love me, as you know I loved you.  
Time for me to leave you, I won't say goodbye;  
Look for me in rainbows, high up in the sky.  
In the evening sunset, when all the world is through,  
Just look for me and love me, and I'll be close to you.  
It won't be forever, the day will come and then  
My loving arms will hold you, when we meet again.  
Time for us to part now, we won't say goodbye;  
Look for me in rainbows, shining in the sky.  
Every waking moment, and all your whole life through,  
Just look for me and love me, as you know I loved you.  
Just wish me to be near you,  
And I'll be there with you.



RECESSIONAL MUSIC  
Three Little Birds  
by Bob Marley and The Wailers



Mel's family warmly invite you to join them, after the ceremony, for some refreshments at The Copper Beech, Kirklington Road, Bilsthorpe, Newark NG22 8SS.

If anyone would kindly like to make a donation in remembrance of Mel's life, all donations will go to the

**RSPCA**

in respect for Mel's love for animals.

Donations may be sealed in the donation envelope and placed in the box on leaving the service,

or left online at

**[www.lymn.co.uk/obituaries](http://www.lymn.co.uk/obituaries)**

or by scanning the QR code below or sent care of

**A.W. LYMN**

*The Family Funeral Service®*

296 Southwell Road East

Rainworth, Mansfield

Nottinghamshire

NG21 0EB

[www.lymn.co.uk](http://www.lymn.co.uk)

CCLI Copyright Licence No. 508305

