



The family would like to thank everyone for their kind words and support at this sad time.

All are welcome for light refreshments at
The Corn Mill, Swiney Way, Beeston,
Nottingham NG9 6GX.

Memorial donations for
Diabetes UK
may be left in the box provided
using our donation envelopes
on leaving the service, left online at
www.lymn.co.uk/obituaries
or sent care of

A.W. LYMN

The Family Funeral Service

Parker House
25 Church Street
Stapleford
Nottingham
NG9 8GA

www.lymn.co.uk

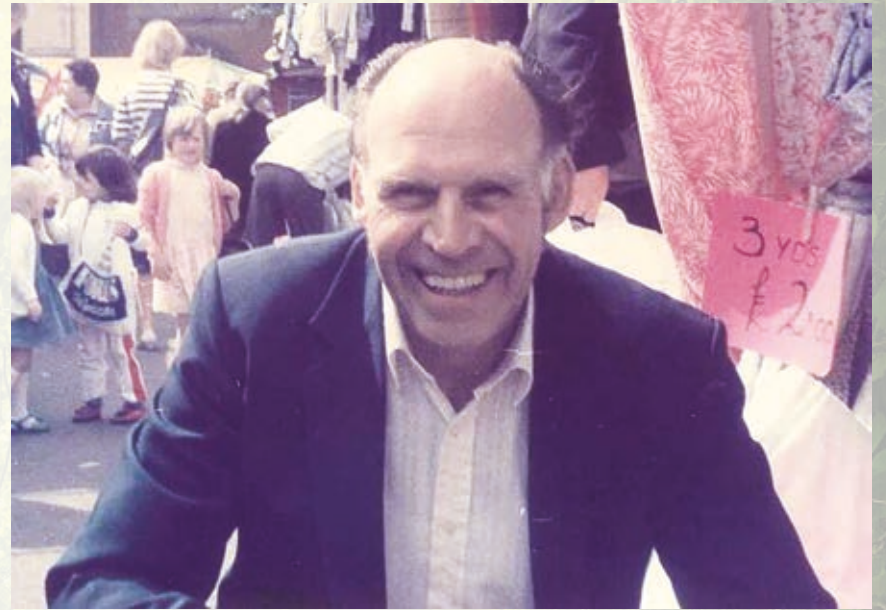
CCLI Copyright Licence No. 508305



IN LOVING MEMORY OF
JOHN TERENCE PARKES
'TERRY'

10th September 1933 - 3rd December 2019

—
Friday 3rd January 2020 at 12.30 pm
Bramcote Crematorium, Serenity Chapel



COMMITTAL AND FAREWELL

CLOSING WORDS

POEM

Smile

Smiling is infectious,
You catch it like the flu.
When someone smiled at me today
I started smiling too,
I walked around the corner
And someone saw me grin,
When he smiled I realised
I had passed it on to him.
I thought about the smile
And then realised it's worth
A single smile like mine,
Could travel round the earth.
So if you feel a smile begin
Don't leave it undetected
Start an epidemic,
And get the world infected.

Spike Milligan

EXIT MUSIC

Piano Man
by Billy Joel

ORDER OF SERVICE

ENTRANCE MUSIC

Jealous Of The Angels
by Katherine Jenkins

WELCOME AND INTRODUCTION

POEM
The Star
read by Andrew

A light went out on earth for us
The day we said goodbye,
And on that day a star was born;
The brightest in the sky.
Reaching through the darkness,
With it's rays of purest light.
Lighting up the heavens
As it once lit up our lives;
With beams of love to heal
The broken hearts you left behind,
Where always in our memory
Your lovely star will shine.

MUSIC FOR REFLECTION
Play It Again Terry

EULOGY
by Celebrant, Richard Marshall