

IN LOVING MEMORY OF



DONALD VICTOR BOTT

19th July 1932 - 6th August 2024

Wednesday 4th September 2024 at 11.30 am
Reflection Chapel, Bramcote Crematorium



ORDER OF SERVICE

Led by Celebrant Mark, Chapman



ENTRANCE MUSIC

Amazing Grace
London Gospel Community Choir

WELCOME AND OPENING WORDS

MEMORIES OF DON'S LIFE

POEM

We Had A Wonderful Uncle
read by Don's great niece, Charlotte Storer

We had a wonderful uncle,
One who never really grew old.
His smile was made of sunshine
And his heart was solid gold.
His eyes were as bright as shining stars
And in his cheeks fair roses, you see.
We had a wonderful uncle,
And that's the way it will always be.
But take heed, because
He's still keeping an eye on all of us,
So let's make sure
He will like what he sees.

REFLECTION MUSIC

Sleepy Shores
André Rieu and the Johann Strauss Orchestra



THE LORD'S PRAYER

Our Father, who art in heaven, hallowed be Thy name.
Thy Kingdom come, Thy will be done, on earth as it is in heaven.
Give us this day our daily bread. And forgive us our trespasses,
as we forgive those who trespass against us.
And lead us not into temptation, but deliver us from evil.
For Thine is the Kingdom, the power and the glory,
for ever and ever. Amen.

FAREWELL



POEM

Do Not Stand At My Grave And Weep
read by Don's great nephew, Chris Bott

Do not stand at my grave and weep;
I am not there, I do not sleep.
I am a thousand winds that blow,
I am the diamond glints on snow.

I am the sunlight on ripened grain,
I am the gentle autumn rain.
When you awaken in the morning's hush,
I am the swift uplifting rush

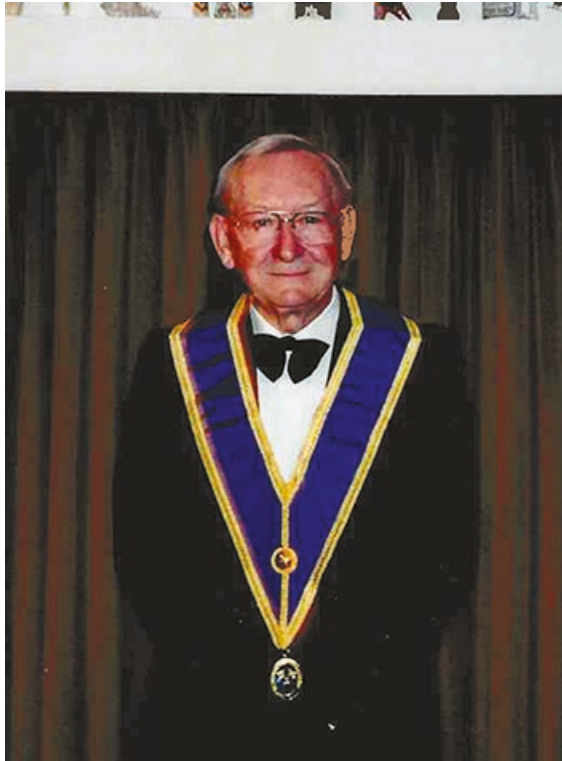
Of quiet birds in circled flight.
I am the soft stars that shine at night.
Do not stand at my grave and cry;
I am not there. I did not die.

Mary Elizabeth Frye (1905-2004)

CLOSING WORDS

EXIT MUSIC

Eternal Father Strong To Save
Royal Naval College Chapel Choir





The family thank you for your attendance here today, and warmly invite everyone to The Nuthall, Nottingham Road, Cinderhill, Nottingham NG8 6AX.

Donations, if desired, are to benefit
Dementia UK
via the QR code below or in the donations box after the service.

A.W. LYMN

The Family Funeral Service

Rose House
389 Nuthall Road
Aspley
NG8 5DB

www.lymn.co.uk

CCLI Copyright Licence No. 508305

